



# Neuralized-1 Polyclonal Antibody

<b>Catalog No</b>	YP-Ab-02715
<b>Isotype</b>	IgG
<b>Reactivity</b>	Human;Rat;Mouse;
<b>Applications</b>	WB;IHC;IF;ELISA
<b>Gene Name</b>	NEURL
<b>Protein Name</b>	Neuralized-like protein 1A
<b>Immunogen</b>	The antiserum was produced against synthesized peptide derived from human NEURL1. AA range:219-268
<b>Specificity</b>	Neuralized-1 Polyclonal Antibody detects endogenous levels of Neuralized-1 protein.
<b>Formulation</b>	Liquid in PBS containing 50% glycerol, 0.5% BSA and 0.02% sodium azide.
<b>Source</b>	Polyclonal, Rabbit,IgG
<b>Purification</b>	The antibody was affinity-purified from rabbit antiserum by affinity-chromatography using epitope-specific immunogen.
<b>Dilution</b>	WB: 1/500 - 1/2000. IHC: 1/100 - 1/300. ELISA: 1/40000.. IF 1:50-200
<b>Concentration</b>	1 mg/ml
<b>Purity</b>	≥90%
<b>Storage Stability</b>	-20°C/1 year
<b>Synonyms</b>	NEURL; NEURL1; NEURL1A; RNF67; Neuralized-like protein 1A; h-neu; h-neuralized 1; RING finger protein 67
<b>Observed Band</b>	62kD
<b>Cell Pathway</b>	Cytoplasm, perinuclear region . Cell membrane ; Peripheral membrane protein . Perikaryon . Cell projection, dendrite . Cell junction, synapse, postsynaptic density . Localized in the cell bodies of the pyramidal neurons and distributed along their apical dendrites. Colocalized with PSD95 in postsynaptic sites. Colocalized with CPEB3 at apical dendrites of CA1 neurons (By similarity). Colocalized with JAG1 at the cell surface. .
<b>Tissue Specificity</b>	Expressed in brain, testis, pituitary gland, pancreas and bone marrow. Also poorly expressed in malignant astrocytomas and several neuroectodermal tumor cell lines. Weakly expressed in medulloblastoma (MB) compared with normal cerebellar tissues.
<b>Function</b>	microtubule cytoskeleton organization, microtubule bundle formation, reproductive developmental process, cell motion, cytoskeleton organization, microtubule-based process, gamete generation, germ cell development, spermatogenesis, spermatid development, sperm axoneme assembly, lactation, flagellum assembly, cellular component assembly involved in morphogenesis, sexual reproduction, cell projection organization, cell projection assembly, sperm motility, mammary gland development, multicellular organism reproduction, cellular component morphogenesis, axoneme assembly, flagellar



axoneme assembly, flagellum organization, male gamete generation, spermatid differentiation, reproductive process in a multicellular organism, reproductive cellular process, gland development, cell motility, localization of cell,

**Background**

NEURL1B (neuralized homolog 1B), also known as neur2 or NEURL3, is a 555 amino acid protein that functions as an E3 ubiquitin-protein ligase. Involved in protein ubiquitination, NEURL1B contains two NHR (neuralized homology repeat) domains and one RING-type zinc finger. NEURL4 (neuralized homolog 4 (Drosophila)), also known as neuralized-like protein 4, is a 1,562 amino acid protein that is highly expressed in a wide variety of tissues. Containing six NHR (neuralized homology repeat) domains, NEURL4 exists as two alternatively spliced isoforms that are encoded by a gene that maps to human chromosome 17p13.1.

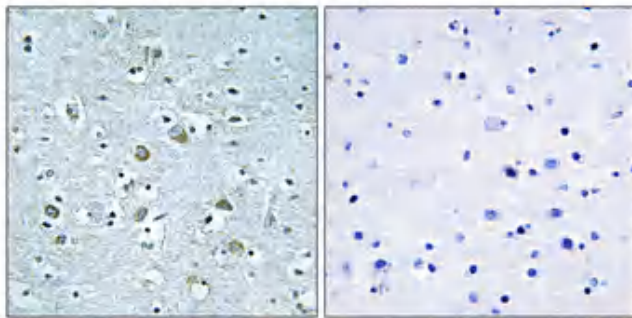
**matters needing attention**

Avoid repeated freezing and thawing!

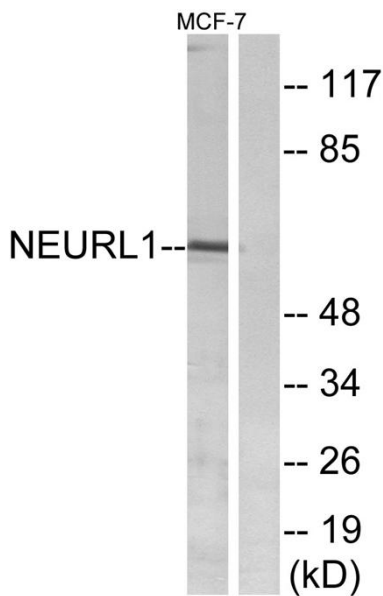
**Usage suggestions**

This product can be used in immunological reaction related experiments. For more information, please consult technical personnel.

**Products Images**



Immunohistochemical analysis of paraffin-embedded Human brain. Antibody was diluted at 1:100(4° overnight). High-pressure and temperature Tris-EDTA, pH8.0 was used for antigen retrieval. Negative control (right) obtained from antibody was pre-absorbed by immunogen peptide.



Western blot analysis of lysates from MCF-7 cells, using NEURL1 Antibody. The lane on the right is blocked with the synthesized peptide.